

Danfoss powers green energy and thermal management

Danfoss WQS series quick change products are designed for the cooling purposes of green energy and electronic devices, which are suitable for mass flow, no leakage and low flow resistance required by the cooling of energy storage battery and converter.

Features

- A light and compact structure in aluminum alloy
- EPDM seal (standard) and seals of other materials are available due to its extensive medium compatibility
- No-pollution flat and double seal design for reliable seal connection, avoiding any air escaping into the loop
- High flow rate without overflow
- Operating temperature: $-40^{\circ}\text{C} \sim 80^{\circ}\text{C}$



Railway



Battery Management



Performance parameter

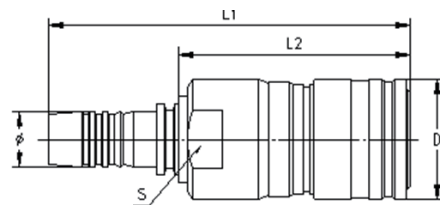
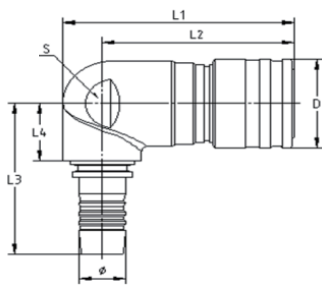
Maximum working pressure

Minimum burst pressure

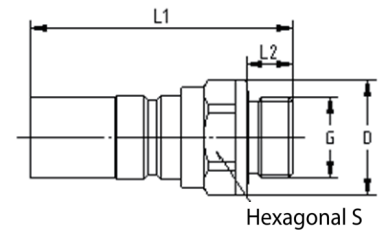
Rated flow

(bar)	(psi)	(bar)	(psi)	(lpm)	(gpm)
15	217	60	870	30	7.9

Female model	Description	End connection diameter \varnothing (mm)	D	L1	L2	L3	L4	L	S
WQS9-12F-XC16AL	90°elbow	16	35	79.5	66	61	23	83.5	29
WQS-12F-XC16AL	Direct connection	16	35	105	66.5	—	—	83	30
WQS9-12F-XC10AL	90°elbow	10	35	79.5	66	57	23	83.5	29
WQS-12F-XC10AL	Direct connection	10	35	103	66.5	—	—	86.5	30



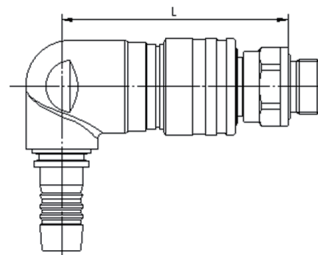
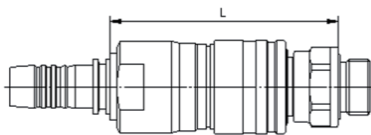
Female



Male

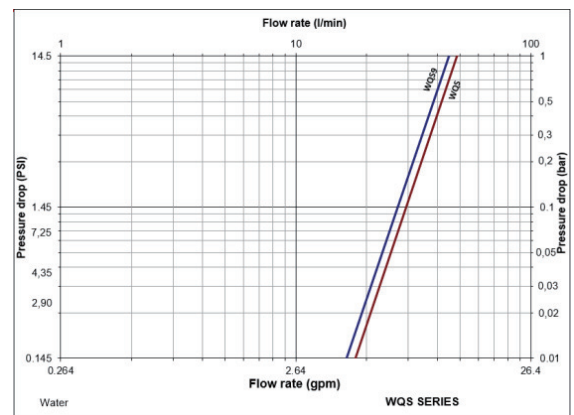
Male model	Description	G	D	L1	L2	S
WQS-12M-XC16AL	Direct connection	G1/2	29.8	68.5	12	27

Connection dimension



Application and market

- Liquid cooling of electronic devices
- Thermal management system
- Input of industrial fluid



Test fluid :water
Test temperature: 23.4°C / 73.4°F

Danfoss丹佛斯签约中国经销商：北京汉深流体技术有限公司

地址：北京朝阳区望京 SOHO-T1-C 座 2115 室 邮编：100102
手机：139 1096 2635 电子邮件：sales@cnmec.biz

