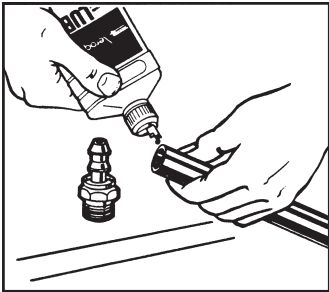


Fitting assembly with Boston EHW194 and EHW094 hose

# Hose assembly instructions

Socketless, FD83 and UQD connectors

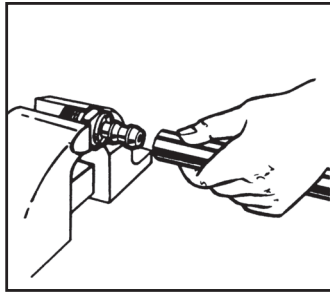
## SOCKETLESS® fittings with Boston® EHW094 and EHW194 hose



### To Assemble

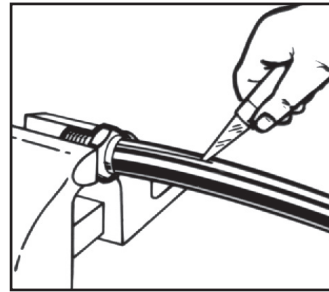
#### Step 1

Cut hose to required length with a sharp knife. Oil inside of hose and outside of SOCKETLESS nipple liberally.



#### Step 2

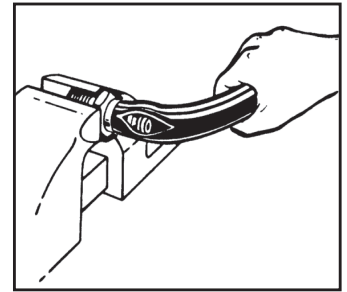
Push hose on fitting until hose end bottoms underneath protective cap as shown. For quantity production use a SOCKETLESS fitting assembly machine.



### To Disassemble

#### Step 1

Slit hose lengthwise from protective cap to end of nipple.

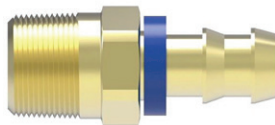


#### Step 2

Bend hose, then snap hose off with a quick tug.

## SOCKETLESS fittings

Low pressure service



Clamp location on hose fitting



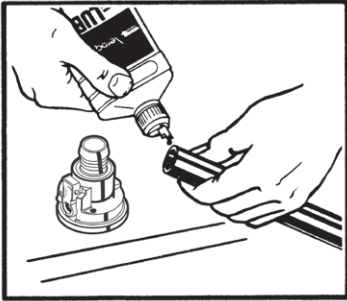
## CLAMP INFORMATION for SOCKETLESS, FD83 and UQD connectors



Dash size	Part number	Reference	Ear width mm (Inch)	Band width mm (Inch)	Size range mm (Inch)
-04	FF91764-162	016.0-706R	8.0 (0.315)	7.0 (0.276)	13.5 - 16.0 (0.53 - 0.63)
-06	FF91764-198	019.8-706R	10.0 (0.394)	7.0 (0.276)	16.6 - 19.8 (0.65 - 0.78)
-08	FF91764-241	024.1-706R	10.0 (0.394)	7.0 (0.276)	20.9 - 24.1 (0.82 - 0.95)
-10	FF91764-271	027.1-706R	10.0 (0.394)	7.0 (0.276)	23.9 - 27.1 (0.94 - 1.07)
-12	FF91764-316	031.6-706R	10.0 (0.394)	7.0 (0.276)	28.4 - 31.6 (1.12 - 1.24)
-16	FF91764-396	039.6-706R	10.0 (0.394)	7.0 (0.276)	36.4 - 39.6 (1.43 - 1.56)

The use of clamp is dependent on the performance parameters of hose. Please refer to hose pressure ratings for when clamp is required.

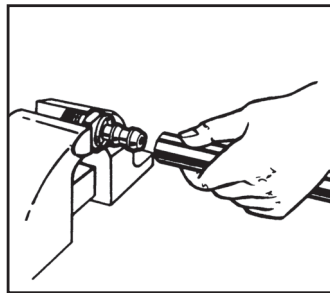
## FD83 and UQD Series hose assembly instructions for quick disconnect coupling with Boston EHW094 & EHW194 hose



### To Assemble

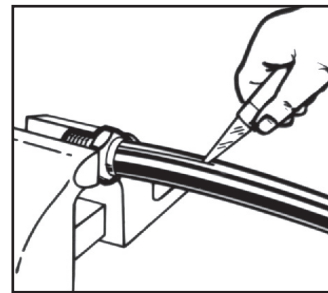
#### Step 1

Cut hose to required length with a sharp knife. Oil inside of hose and outside nipple liberally.



#### Step 2

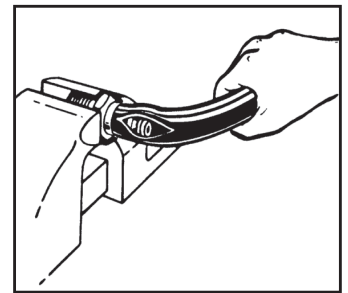
Push hose on coupling until hose barb touches the flat surface of the coupling body.



### To Disassemble

#### Step 1

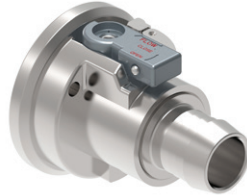
Slit hose lengthwise from edge of coupling body to end of the barb.



#### Step 2

Bend hose, then snap hose off with a quick tug.

### FD83 series Full-flow dual-interlock coupling



### Universal Quick Disconnect (UQD) For thermal management applications

