

Danfoss Hansen®

FD83 Full-Flow Quick Disconnect Coupling

Unique dual interlock safety feature.

Full-flow characteristics.

Characteristics:

- Compact stainless-steel construction extends life for safer operations, easy maintenance and space optimization.
- No spillage of fluid when connecting and disconnecting
- Proprietary profile with patented locking pin design and lever handle.



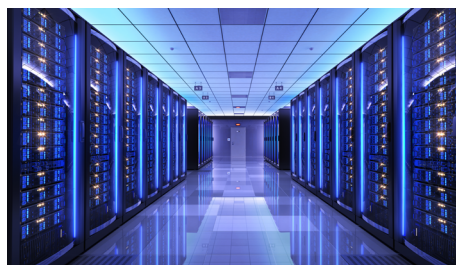
Markets/Applications

- Data center source line
- Electrification cooling
- Industrial fluid transfer



Sells Against

- Stäubli TDU 24 Series
- Johnson TSZ Series
- CEJN OCP Large QC



Features

- **Identical coupling halves** with safe mechanism to **prevent accidental opening** of coupling when disconnected and **no spillage**
- **Full-flow** feature **reduces pressure drop** and **maximizes system efficiency**
- **303 Stainless steel** body material and **EPDM** standard seal material for **high corrosion resistance** and broad **fluid compatibility**
- **2 Sizes available** (1" and 2") with different **end-connection types**

Order Fulfillment

- Standard FD83 configurations stocked in **AMER, APAC** and **EMEA** distribution centers.



Physical Characteristics

Coupling Size (in)	Max. Operating Pressure						Min. Burst Pressure						Rated Flow (lpm)	Fluid Loss cc. max	CV value	
	Connected		Socket/Female Half		Socket/Female Half		Connected		Socket/Female Half		Socket/Female Half					
	(bar)	(psi)	(bar)	(psi)	(bar)	(psi)	(bar)	(psi)	(bar)	(psi)	(bar)	(psi)	(gpm)			
1	10	150	10	150	10	150	20	300	20	300	20	300	189	50	5.0	30
2 New!	10	150	10	150	10	150	20	300	20	300	20	300	800	211	12	127

Flow Data

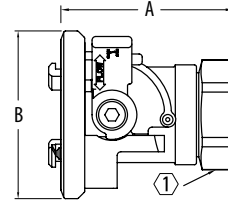
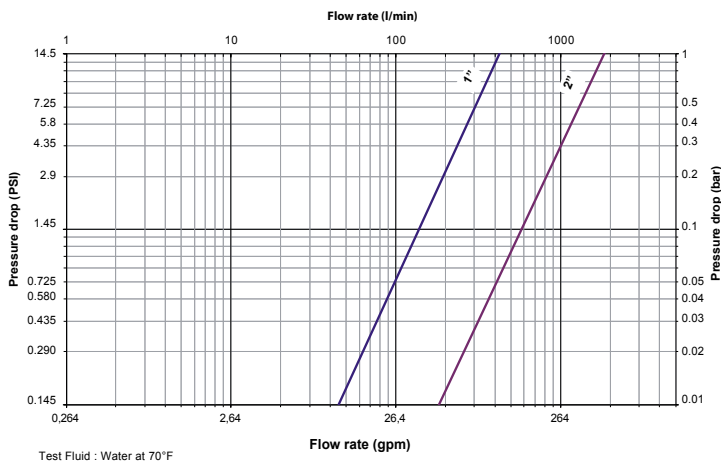


Figure 1

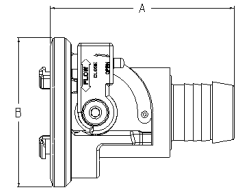


Figure 2

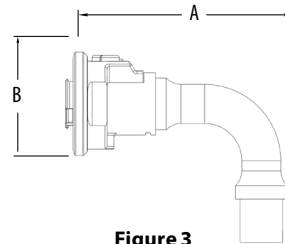


Figure 3

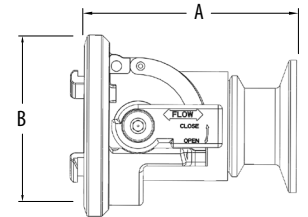


Figure 4

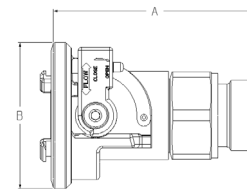


Figure 5

Dimensions

Part Number	Body Size	Port Size	Thread	Type	Fig.	Dimensions		Hex mm	Hex (in)		
						A mm	A (in)				
FD83-2052-16-16	1	1	1-11- 1/2	Female NPTF	1	95.5	(3.76)	71.6	(2.82)	41	(1.63)
FD83-2052-12-16	1	3/4	3/4-14	Female NPTF	1	70.1	(2.76)	71.6	(2.82)	41	(1.63)
FD83-2046-16-16	1	1	NA	1" Hose Barb	2	84.2	(3.31)	71.6	(2.82)	-	-
FD83-2092-16-16	1	1	NA	1" Hose Barb 90°	3	125	(4.92)	71.6	(2.82)	-	-
FD83-2096-16-16	1	1	1 5/16-12	Male ORB	5	95.5	(3.76)	71.6	(2.82)	41	(1.63)
FD83-2140-16-16	1	1	G1-11	Male BSPP	5	95.5	(3.76)	71.6	(2.82)	41	(1.63)
FD83-2126-16-16	1	1	G1-11	Female BSPP	1	84.3	(3.32)	71.6	(2.82)	41	(1.63)
FD83-2128-16-16	1	1	NA	Sanitary Flange 1"	4	79.6	(3.13)	71.6	(2.82)	-	-
FD83-2126-32-32	2	2	G2-11	Female BSPP	1	122.4	(4.82)	105.3	(4.15)	70	(2.76)
FD83-2128-32-32	2	2	NA	Sanitary Flange 2"	4	102.4	(4.03)	105.3	(4.15)	-	-
FD83-2052-32-32	2	2	2-11- 1/2	Female NPT	1	122.4	(4.82)	105.3	(4.15)	70	(2.76)

Other end connections available upon request.

Danfoss丹佛斯签约中国经销商：北京汉深流体技术有限公司

地址：北京朝阳区望京 SOHO-T1-C 座 2115 室 邮编：100102

手机：139 1096 2635 电子邮件：sales@cnmec.biz

Danfoss can accept no responsibility for possible errors in catalogs, brochures and other printed material. Danfoss reserves the right to alter its products without notice. This also applies to products already on order provided that such alterations can be made without subsequent changes being necessary in specifications already agreed. All trademarks in this material are property of the respective companies. Danfoss and the Danfoss logotype are trademarks of Danfoss A/S. All rights reserved.