

Safeline Series

ISO 6150 B GD10500

Safety-Type Quick-Release

Pneumatic application

Danfoss' Safeline Series is an Industrial Interchange pneumatic coupling with push button safety feature designed for use with compressed air. Two-step disconnect procedure shuts off air supply and releases downstream air pressure before plug can be removed from socket/female, which prevents hose whip.



Product Features

- Safe and easy to connect and disconnect
- Light weight, compact ergonomic design
- Accepts 1/4" ISO 6150 Series B and A-A-59439 plugs/males
- Accepts all US industrial plugs/males
- Standard body material: Aluminum
- Standard seal material: Buna-N
- Option: Private labelling

Physical Characteristics

| Body Size | Nominal Flow Diameter (mm) | Max. Operating Pressure Connected or Disconnected | | Air Flow Rate* Δp 0.6 bar/8.7 psi** | | Δp 1 bar/14.5 psi*** | | Working Temperature | |
|-----------|-------------------------------|--|-------|--|-------|----------------------|-------|---------------------|-----------|
| | | (bar) | (psi) | (lpm) | (gpm) | (lpm) | (gpm) | °C | °F |
| 1/4 | 5.5 | 16 | 232 | 525 | 139 | 660 | 174 | -20° +100° | -4° +212° |

*Indicated values refer to an inlet pressure of 6 bar / 87 psi.

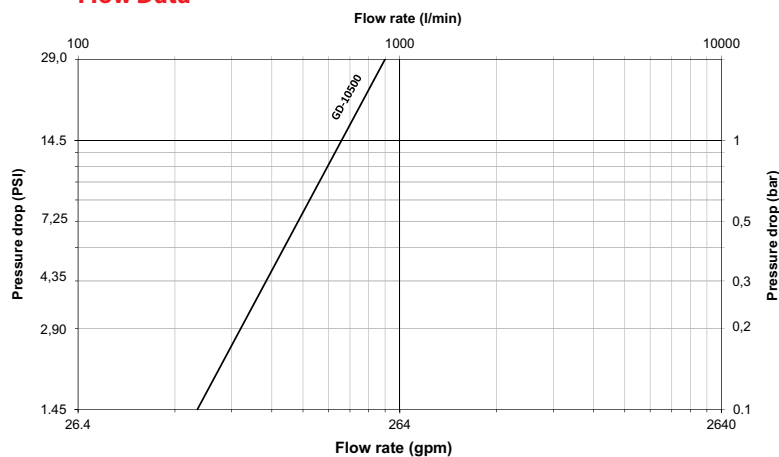
**This flow rate allows the optimum output from a pneumatic tool.

*** This flow rate is the maximum recommended for a suitable output from a pneumatic tool. For applications needing higher flow rates, it is recommended to select a larger size coupling.

Applications & Markets

- General Pneumatics
- Air Tools
- Industrial Plants
- Maintenance and Repair

Flow Data



Air flow-rate at 6 bar (87 psi)

Safeline Series

ISO 6150 B GD10500 Safety-Type Quick-Release

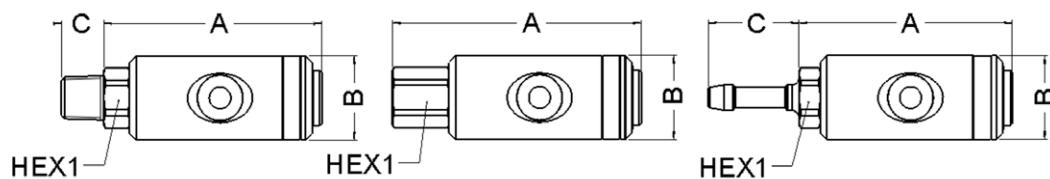


Figure 1

Figure 2

Figure 3

Sockets (Female)

| Part Number | Body Size | Port Size | Thread or Hose Diam. | Type | Fig. | Dimensions | | | | A | B | C | Hex1 | Weight | |
|-------------|-----------|-----------|----------------------|--------------------|------|------------|------|------|------|------|------|------|------|--------|-----|
| | | | | | | A | B | C | Hex1 | | | | | | |
| | | | | | | (in) | (in) | (in) | (in) | (mm) | (mm) | (mm) | (mm) | (lbs) | (g) |
| GD1053615 | | ¼ | ¼ | Male BSPP | 1 | 2.57 | 1.02 | 0.48 | 0.75 | 65.3 | 26.0 | 12.2 | 19 | 0.23 | 106 |
| GD1053614 | | ¼ | ¼ | Male BSPT | 1 | 2.65 | 1.02 | 0.51 | 0.67 | 67.3 | 26.0 | 13.0 | 17 | 0.23 | 105 |
| GD1053641 | | ¼ | ¼ | Male NPT | 1 | 2.65 | 1.02 | 0.59 | 0.67 | 67.2 | 26.0 | 15.1 | 17 | 0.26 | 118 |
| GD1053639 | | ¾ | ¾ | Male BSPP | 1 | 2.61 | 1.02 | 0.47 | 0.87 | 66.3 | 26.0 | 12.0 | 22 | 0.26 | 116 |
| GD1053638 | | ¾ | ¾ | Male BSPT | 1 | 2.65 | 1.02 | 0.57 | 0.67 | 67.3 | 26.0 | 14.5 | 17 | 0.25 | 113 |
| GD1053683 | | ¾ | ¾ | Male NPT | 1 | 2.62 | 1.02 | 0.60 | 0.75 | 66.5 | 26.0 | 15.3 | 19 | 0.28 | 129 |
| GD1053613 | | ½ | ½ | Male BSPP | 1 | 2.69 | 1.02 | 0.55 | 1.06 | 68.3 | 26.0 | 14.0 | 27 | 0.32 | 145 |
| GD1053612 | | ½ | ½ | Male BSPT | 1 | 2.61 | 1.02 | 0.67 | 0.87 | 66.3 | 26.0 | 17.0 | 22 | 0.28 | 129 |
| GD1053621 | | ½ | ½ | Male NPT | 1 | 2.61 | 1.02 | 0.79 | 0.87 | 66.3 | 26.0 | 20.0 | 22 | 0.32 | 145 |
| GD1052614 | ¼ | ¼ | ¼ | Female BSPP | 2 | 2.33 | 1.02 | 0.00 | 0.67 | 76.8 | 26.0 | - | 17 | 0.23 | 105 |
| GD1052641 | | ¼ | ¼ | Female NPT | 2 | 2.33 | 1.02 | 0.00 | 0.67 | 76.3 | 26.0 | - | 17 | 0.23 | 105 |
| GD1052638 | | ¾ | ¾ | Female BSPP | 2 | 3.14 | 1.02 | 0.00 | 0.87 | 79.8 | 26.0 | - | 22 | 0.27 | 124 |
| GD1052683 | | ¾ | ¾ | Female NPT | 2 | 3.08 | 1.02 | 0.00 | 0.87 | 78.3 | 26.0 | - | 22 | 0.27 | 123 |
| GD1052612 | | ½ | ½ | Female BSPP | 2 | 3.30 | 1.02 | 0.00 | 1.06 | 83.8 | 26.0 | - | 27 | 0.33 | 151 |
| GD1052621 | | ½ | ½ | Female NPT | 2 | 3.24 | 1.02 | 0.00 | 1.06 | 82.3 | 26.0 | - | 27 | 0.37 | 166 |
| GD1055667 | - | - | 6 mm | Reusable Hose Fit. | 3 | 2.59 | 1.02 | 1.10 | 0.67 | 65.8 | 26.0 | 28.0 | 17 | 0.23 | 103 |
| GD1055678 | - | - | 7 mm | Reusable Hose Fit. | 3 | 2.59 | 1.02 | 1.10 | 0.67 | 65.8 | 26.0 | 28.0 | 17 | 0.25 | 113 |
| GD1055689 | - | - | 8 mm | Reusable Hose Fit. | 3 | 2.59 | 1.02 | 1.10 | 0.67 | 65.8 | 26.0 | 28.0 | 17 | 0.23 | 104 |
| GD1055690 | - | - | 9 mm | Reusable Hose Fit. | 3 | 2.59 | 1.02 | 1.10 | 0.67 | 65.8 | 26.0 | 28.0 | 17 | 0.23 | 106 |
| GD1055601 | - | - | 10 mm | Reusable Hose Fit. | 3 | 2.59 | 1.02 | 1.10 | 0.67 | 65.8 | 26.0 | 28.0 | 17 | 0.23 | 105 |

To obtain connected length of coupling add Dimensions A or A+C (Fig. 1, 2, 3) and D or D+E (Fig. 4, 5, 6, 7, 8) together and subtract 23 mm (0,91 in).

*Alternative end connections available upon request.

Safeline Series

ISO 6150 B GD10500 Safety-Type Quick-Release

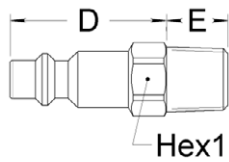


Figure 4

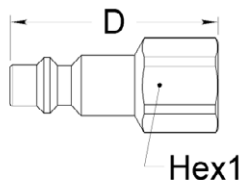


Figure 5

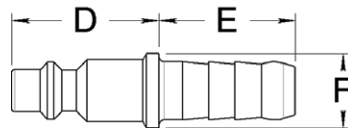


Figure 6

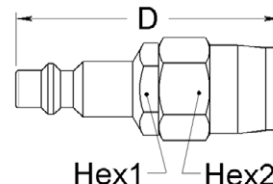


Figure 7

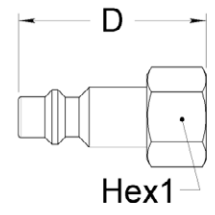


Figure 8

Plugs (Male)

| Part Number | Body Size | Port Size | Thread or Hose Diam. | Type | Fig. | Dimensions | | | Hex1 (in) | Hex2 (in) | D (mm) | E (mm) | F (mm) | Hex1 (mm) | Hex2 (mm) | Weight | |
|-------------|-----------|-----------|----------------------|----------------------|------|------------|--------|--------|-----------|-----------|--------|--------|--------|-----------|-----------|---------|-----|
| | | | | | | D (in) | E (in) | F (in) | | | | | | | | (lbs) | (g) |
| GA0066318 | | 1/8 | 1/8-28 | Male BSPT | 4 | 1.260 | 0.354 | - | 0.472 | - | 32 | 9 | - | 12 | - | 0.04189 | 19 |
| GA0066314 | | 1/4 | 1/4-19 | Male BSPT | 4 | 1.260 | 0.512 | - | 0.551 | - | 32 | 13 | - | 14 | - | 0.06 | 25 |
| 10 | | 1/4 | 1/4-18 | Male NPT | 4 | 1.220 | 0.551 | - | 0.591 | - | 31 | 14 | - | 15 | - | 0.06 | 25 |
| GA0066338 | | 3/8 | 3/8-19 | Male BSPT | 4 | 1.260 | 0.591 | - | 0.669 | - | 32 | 15 | - | 17 | - | 0.08 | 38 |
| GA0066345 | | M14 | M14x125 | Male Metric | 4 | 1.260 | 0.512 | - | 0.551 | - | 32 | 13 | - | 14 | - | 0.06 | 26 |
| GA0066214 | | 1/4 | 1/4-19 | Female BSPP | 5 | 1.732 | - | - | 0.669 | - | 44 | - | - | 17 | - | 0.07 | 30 |
| 11 | | 1/4 | 1/4-18 | Female NPT | 5 | 1.634 | - | - | 0.709 | - | 41.5 | - | - | 18 | - | 0.07 | 30 |
| GA0066238 | | 3/8 | 3/8-19 | Female BSPP | 5 | 1.732 | - | - | 0.827 | - | 44 | - | - | 21 | - | 0.08 | 37 |
| GA0066245 | | M14 | M14x125 | Female Metric | 5 | 1.732 | - | - | 0.669 | - | 44 | - | - | 17 | - | 0.06 | 26 |
| GA0066248 | 1/4 | - | M14x125 | Female Metric | 5 | 1.732 | - | - | 0.551 | - | 44 | - | - | 14 | - | 0.05 | 24 |
| GA0066767 | | - | 6mm | Hose Tail | 6 | 1.102 | 1.024 | 0.551 | - | - | 28 | 26 | 14 | - | - | 0.04 | 19 |
| GA0066778 | | - | 7mm | Hose Tail | 6 | 1.102 | 1.024 | 0.551 | - | - | 28 | 26 | 14 | - | - | 0.04 | 20 |
| GA0066789 | | - | 8mm | Hose Tail | 6 | 1.102 | 1.024 | 0.551 | - | - | 28 | 26 | 14 | - | - | 0.04 | 20 |
| GA0066790 | | - | 9mm | Hose Tail | 6 | 1.102 | 1.024 | 0.551 | - | - | 28 | 26 | 14 | - | - | 0.04 | 20 |
| GA0066701 | | - | 10mm | Hose Tail | 6 | 1.102 | 1.024 | 0.551 | - | - | 28 | 26 | 14 | - | - | 0.05 | 22 |
| GA0066174 | | - | 7x14 mm | Reusable Hose Fit. | 7 | 2.224 | - | - | 0.630 | 0.748 | 56.5 | - | - | 16 | 19 | 0.12 | 56 |
| GA0066184 | | - | 8x14 mm | Reusable Hose Fit. | 7 | 2.224 | - | - | 0.630 | 0.748 | 56.5 | - | - | 16 | 19 | 0.13 | 57 |
| GA0066185 | | - | 8x15 mm | Reusable Hose Fit. | 7 | 2.224 | - | - | 0.630 | 0.748 | 56.5 | - | - | 16 | 19 | 0.12 | 53 |
| GA0066196 | | - | 9x16 mm | Reusable Hose Fit. | 7 | 2.224 | - | - | 0.630 | 0.748 | 56.5 | - | - | 16 | 19 | 0.11 | 51 |
| GA0066814 | | 1/4 | 1/4-19 | Female BSPP Swivel | 8 | 1.496 | - | - | 0.669 | - | 38 | - | - | 17 | - | 0.06 | 26 |
| GA0066845 | | M14 | M14x125 | Female Metric Swivel | 8 | 1.496 | - | - | 0.669 | - | 38 | - | - | 17 | - | 0.06 | 26 |

To obtain connected length of coupling add Dimensions A or A+C (Fig. 1, 2, 3) and D or D+E (Fig. 4, 5, 6, 7, 8) together and subtract 23 mm (0,91 in).

*Alternative end connections available upon request.

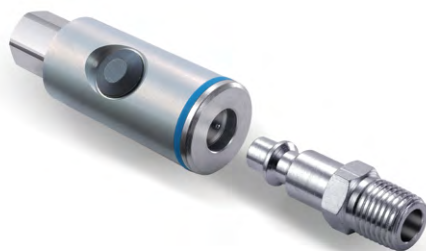
Safeline Series

ISO 6150 B ID10900

Safety-Type Quick-Release

Pneumatic application

Danfoss ID10900 Series is a single shut-off compressed air coupling that interchanges with ISO 6150 C Standards requirements. Nominal diameter is 8 mm. Thanks to a distinct two-movement action, our couplings guarantee worker safety at disconnection by eliminating the “whiplash” effect. It is a must-have for safe air applications.



Product Features

- One-hand push-to-connect
- Automatic button for disconnection
- Meets safety standard ISO 4414
- Single shut-off valving
- Good flow capacity
- Wide selection of end connections
- Standard seal material: NBR (Nitrile)
- Standard body material (Female): Aluminum
- Standard body material (Male): Zinc plated steel
- Option: Private labelling

Physical Characteristics

| Body Size | Nominal Flow Diameter (mm) | Max. Operating Pressure Connected or Disconnected | | Air Flow Rate* Δp 0.6 bar/8.7 psi** | | | | Working Temperature | |
|-----------|-------------------------------|--|-------|--|-------|-------|-------|---------------------|-----------|
| | | (bar) | (psi) | (lpm) | (gpm) | (lpm) | (gpm) | °C | °F |
| 3/8 | 8 | 16 | 232 | 1,590 | 420 | 2,000 | 528 | -20° +100° | -4° +212° |

*Indicated values refer to an inlet pressure of 6 bar / 87 psi.

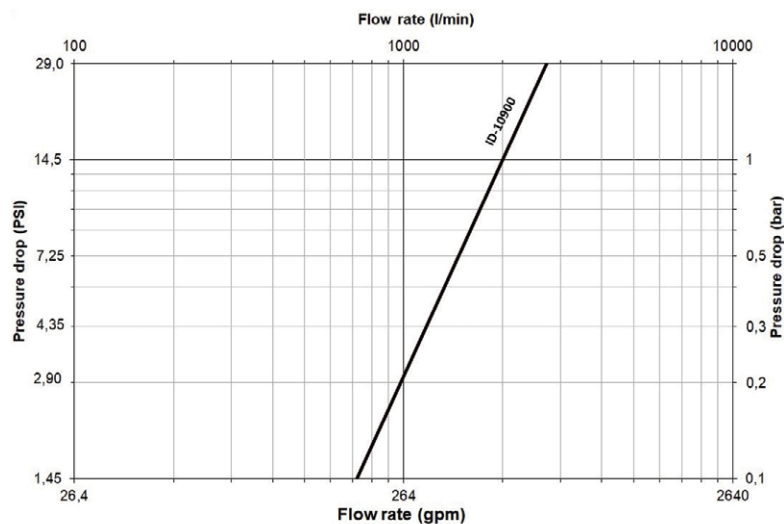
**This flow rate allows the optimum output from a pneumatic tool.

** This flow rate is the maximum recommended for a suitable output from a pneumatic tool. For applications needing higher flow rates, it is recommended to select a larger size coupling.

Applications & Markets

- General Pneumatics
- Air Tools

Flow Data



Air Flow-rate at 6 bar (87psi)

Safeline Series

ISO 6150 B ID10900 Safety-Type Quick-Release

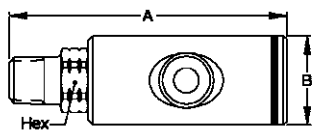


Figure 1

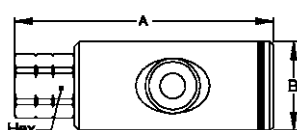


Figure 2

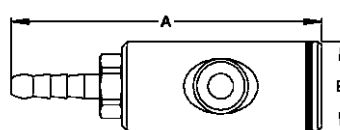


Figure 3

Sockets (Female)

| Part Number | Body Size | Port Size | Thread or Hose Diam. | Type | Fig. | Dimensions | | | | | | | Weight | | |
|-------------|-----------|-----------|----------------------|-------------|------|------------|------|------|------|-------|------|------|--------|-------|-----|
| | | | | | | A | B | C | Hex1 | A | B | C | Hex1 | (lbs) | (g) |
| | | | | | | (in) | (in) | (in) | (in) | (mm) | (mm) | (mm) | (mm) | | |
| ID1096015 | | ¼ | ¼ | Male BSPP | 1 | 3.0 | 1.3 | 0.5 | 0.87 | 76.2 | 34 | 11.9 | 22 | 0.47 | 214 |
| ID1096014 | | ¼ | ¼ | Male BSPT | 1 | 3.0 | 1.3 | 0.5 | 0.87 | 76.1 | 34 | 13 | 22 | 0.47 | 213 |
| ID1096041 | | ¼ | ¼ | Male NPT | 1 | 3.0 | 1.3 | 0.5 | 0.87 | 76 | 34 | 13 | 22 | 0.47 | 213 |
| ID1096039 | | ¾ | ¾ | Male BSPP | 1 | 3.0 | 1.3 | 0.5 | 0.87 | 76.20 | 34 | 11.9 | 22 | 0.48 | 218 |
| ID1096038 | | ¾ | ¾ | Male BSPT | 1 | 3.0 | 1.3 | 0.6 | 0.87 | 76.1 | 34 | 15 | 22 | 0.48 | 219 |
| ID1096083 | | ¾ | ¾ | Male NPT | 1 | 3.0 | 1.3 | 0.6 | 0.87 | 76.1 | 34 | 15 | 22 | 0.48 | 219 |
| ID1096013 | | ½ | ½ | Male BSPP | 1 | 3.0 | 1.3 | 0.5 | 1.06 | 76.2 | 34 | 13.9 | 27 | 0.52 | 238 |
| ID1096012 | | ½ | ½ | Male BSPT | 1 | 3.0 | 1.3 | 0.7 | 0.87 | 76.1 | 34 | 17 | 22 | 0.51 | 233 |
| ID1096021 | | ½ | ½ | Male NPT | 1 | 3.0 | 1.3 | 0.7 | 0.87 | 76.1 | 34 | 17 | 22 | 0.51 | 233 |
| ID1097014 | ¾ | ¼ | ¼ | Female BSPP | 2 | 3.5 | 1.3 | – | 0.87 | 88.1 | 34 | – | 22 | 0.51 | 233 |
| ID1097041 | | ¼ | ¼ | Female NPT | 2 | 3.5 | 1.3 | – | 0.87 | 88.10 | 34 | – | 22 | 0.51 | 233 |
| ID1097038 | | ¾ | ¾ | Female BSPP | 2 | 3.6 | 1.3 | – | 0.87 | 90.60 | 34 | – | 22 | 0.51 | 232 |
| ID1097083 | | ¾ | ¾ | Female NPT | 2 | 3.6 | 1.3 | – | 0.87 | 90.6 | 34 | – | 22 | 0.51 | 232 |
| ID1097012 | | ½ | ½ | Female BSPP | 2 | 3.7 | 1.3 | – | 1.06 | 94.1 | 34 | – | 27 | 0.59 | 267 |
| ID1097021 | | ½ | ½ | Female NPT | 2 | 3.7 | 1.3 | – | 1.06 | 94.1 | 34 | – | 27 | 0.59 | 269 |
| ID1095678 | – | | 7 mm | Hose Tail | 3 | 3.0 | 1.3 | 1.1 | 0.87 | 77.1 | 34 | 28 | 22 | 0.47 | 215 |
| ID1095689 | – | | 8 mm | Hose Tail | 3 | 3.0 | 1.3 | 1.1 | 0.87 | 77.1 | 34 | 28 | 22 | 0.48 | 216 |
| ID1095690 | – | | 9 mm | Hose Tail | 3 | 3.0 | 1.3 | 1.1 | 0.87 | 77.1 | 34 | 28 | 22 | 0.48 | 218 |
| ID1095601 | – | | 10 mm | Hose Tail | 3 | 3.0 | 1.3 | 1.1 | 0.87 | 77.1 | 34 | 28 | 22 | 0.48 | 219 |

To obtain connected length of coupling add dimensions A or A+C (Fig. 1, 2, 3) and D or D+E (Fig. 4, 5, 6) together and subtract 25,6 mm (1 in.).

*Alternative end connections available upon request.

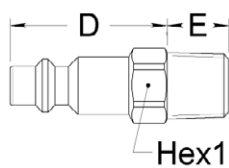


Figure 4

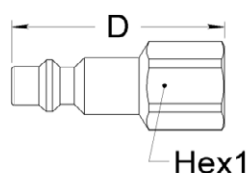


Figure 5



Figure 6

Plugs (Male)

| Part Number | Body Size | Port Size | Thread or Hose Diam. | Type | Fig. | Dimensions | | | | | | | Weight | | |
|-------------|-----------|-----------|----------------------|-------------|------|------------|------|------|------|-------|-------|-------|--------|-------|-------|
| | | | | | | D | E | F | Hex1 | D | E | F | Hex1 | (lbs) | (g) |
| | | | | | | (in) | (in) | (in) | (in) | (mm) | (mm) | (mm) | (mm) | | |
| IA0090614 | | ¼ | ¼ | Male BSPT | 4 | 1.34 | 0.51 | – | 0.63 | 34.00 | 13.00 | – | 16.00 | 0.07 | 32.00 |
| IA0090638 | | ¾ | ¾ | Male BSPT | 4 | 1.42 | 0.59 | – | 0.67 | 36.00 | 15.00 | – | 17.00 | 0.09 | 41.00 |
| IA0090612 | | ½ | ½ | Male BSPT | 4 | 1.57 | 0.67 | – | 0.91 | 40.00 | 17.00 | – | 23.00 | 0.12 | 56.00 |
| IA0090714 | | ¼ | ¼ | Female BSPP | 5 | 1.97 | – | – | 0.67 | 50.00 | – | – | 17.00 | 0.08 | 38.00 |
| IA0090738 | | ¾ | ¾ | Female BSPP | 5 | 1.97 | – | – | 0.83 | 50.00 | – | – | 21.00 | 0.11 | 49.00 |
| IA0090712 | ¾ | ½ | ½ | Female BSPP | 5 | 2.09 | – | – | 1.02 | 53.00 | – | – | 26.00 | 0.15 | 69.00 |
| IA0090978 | – | | 7 mm | Hose Tail | 6 | 1.30 | 1.02 | 0.63 | – | 33.00 | 26.00 | 16.00 | – | 0.07 | 30.00 |
| IA0090989 | – | | 8 mm | Hose Tail | 6 | 1.30 | 1.02 | 0.63 | – | 33.00 | 26.00 | 16.00 | – | 0.07 | 30.00 |
| IA0090990 | – | | 9 mm | Hose Tail | 6 | 1.30 | 1.02 | 0.63 | – | 33.00 | 26.00 | 16.00 | – | 0.07 | 31.00 |
| IA0090901 | – | | 10 mm | Hose Tail | 6 | 1.30 | 1.02 | 0.63 | – | 33.00 | 26.00 | 16.00 | – | 0.07 | 32.00 |
| IA0090912 | – | | 11-12 mm | Hose Tail | 6 | 1.30 | 1.22 | 0.63 | – | 33.00 | 31.00 | 16.00 | – | 0.08 | 38.00 |

To obtain connected length of coupling add dimensions A or A+C (Fig. 1, 2, 3) and D or D+E (Fig. 4, 5, 6) together and subtract 25,6 mm (1 in.).

*Alternative end connections available upon request.

Safeline Series

ISO 6150 C GD18500/GK18600

Pneumatic application

Danfoss' Safeline Series is an Industrial Interchange pneumatic coupling with push button safety feature designed for use with compressed air. Two-step disconnect procedure shuts off air supply and releases downstream air pressure before plug can be removed from socket/female, which prevents hose whip.



Product Features

- Safe and easy to connect and disconnect
- Light weight, compact ergonomic design
- Meets Safety Standard ISO 4414
- Meets ISO 6150 Series C Standard
- Standard body material: Dural
- Standard seal material: Buna-N
- Option: Private labelling

Physical Characteristics

| Body Size | Nominal Flow Diameter (mm) | Max. Operating Pressure Connected or Disconnected | | Air Flow Rate* Δp 0.6 bar/8.7 psi** | | | | Working Temperature | |
|-----------|-------------------------------|--|-------|--|-------|-------|-------|---------------------|-----------|
| | | (bar) | (psi) | (lpm) | (gpm) | (lpm) | (gpm) | °C | °F |
| ¼ | 5.5 | 16 | 232 | 515 | 136 | 650 | 172 | -20° +100° | -4° +212° |

*Indicated values refer to an inlet pressure of 6 bar / 87 psi.

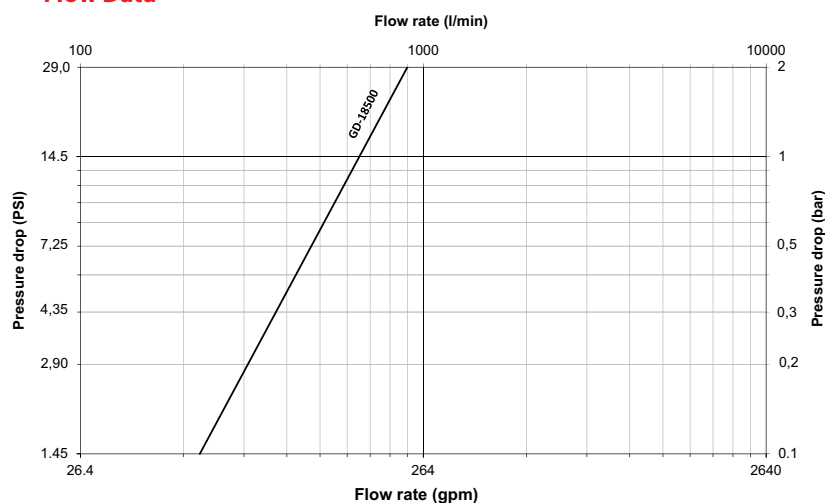
**This flow rate allows the optimum output from a pneumatic tool.

** This flow rate is the maximum recommended for a suitable output from a pneumatic tool. For applications needing higher flow rates, it is recommended to select a larger size coupling.

Applications & Markets

- General Pneumatics
- Air Tools
- Industrial Plants
- Maintenance and Repair

Flow Data



Air flow-rate at 6 bar (87 psi)

Safeline Series

ISO 6150 C GD18500/GK18600

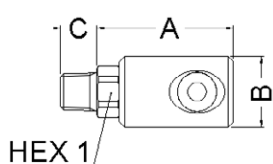


Figure 1

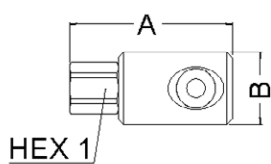


Figure 2

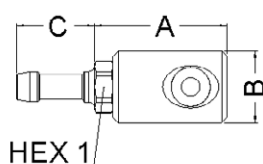


Figure 3

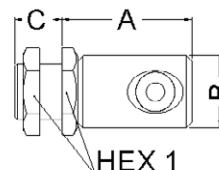


Figure 4

Sockets (Female)

| Part Number | Body Size | Port Size | Thread or Hose Diam. | Type | Fig. | Dimensions | | | Hex1 (in) | A (mm) | B (mm) | C (mm) | Hex1 (mm) | Weight | |
|-------------|-----------|-----------|----------------------|-------------------------|------|------------|--------|--------|-----------|--------|--------|--------|-----------|--------|-----|
| | | | | | | A (in) | B (in) | C (in) | | | | | | (lbs) | (g) |
| GD1853615 | | ¼ | ¼ | Male BSPP | 1 | 1.85 | 1.02 | 0.47 | 0.75 | 47 | 26 | 12 | 19 | 0.17 | 77 |
| GD1853614 | | ¼ | ¼ | Male BSPT | 1 | 1.93 | 1.02 | 0.51 | 0.67 | 49 | 26 | 13 | 17 | 0.17 | 76 |
| GD1853639 | | ¾ | ¾ | Male BSPP | 1 | 1.89 | 1.02 | 0.47 | 0.87 | 48 | 26 | 12 | 22 | 0.20 | 91 |
| GD1853638 | | ¾ | ¾ | Male BSPT | 1 | 1.93 | 1.02 | 0.57 | 0.67 | 49 | 26 | 14.5 | 17 | 0.19 | 84 |
| GD1853613 | | ½ | ½ | Male BSPP | 1 | 1.97 | 1.02 | 0.55 | 1.06 | 50 | 26 | 14 | 27 | 0.25 | 115 |
| GD1853612 | | ½ | ½ | Male BSPT | 1 | 1.89 | 1.02 | 0.67 | 0.87 | 48 | 26 | 17 | 22 | 0.27 | 123 |
| GD1852614 | | ¼ | ¼ | Female BSPP | 2 | 2.30 | 1.02 | - | 0.67 | 58.5 | 26 | - | 17 | 0.17 | 76 |
| GD1852638 | ¼ | ¾ | ¾ | Female BSPP | 2 | 2.42 | 1.02 | - | 0.87 | 61.5 | 26 | - | 22 | 0.22 | 99 |
| GD1852612 | | ½ | ½ | Female BSPP | 2 | 2.58 | 1.02 | - | 1.06 | 65.5 | 26 | - | 27 | 0.27 | 122 |
| GD1855667 | | - | 6 mm | Hose Tail | 3 | 1.87 | 1.02 | 1.10 | 0.67 | 47.5 | 26 | 28 | 17 | 0.16 | 73 |
| GD1855678 | | | 7 mm | Hose Tail | 3 | 1.87 | 1.02 | 1.10 | 0.67 | 47.5 | 26 | 28 | 17 | 0.16 | 74 |
| GD1855689 | | | 8 mm | Hose Tail | 3 | 1.87 | 1.02 | 1.10 | 0.67 | 47.5 | 26 | 28 | 17 | 0.16 | 74 |
| GD1855690 | | | 9 mm | Hose Tail | 3 | 1.87 | 1.02 | 1.10 | 0.67 | 47.5 | 26 | 28 | 17 | 0.17 | 75 |
| GD1855601 | | | 10 mm | Hose Tail | 3 | 1.87 | 1.02 | 1.10 | 0.67 | 47.5 | 26 | 28 | 17 | 0.17 | 79 |
| GD1855613 | | | 13 mm | Hose Tail | 3 | 1.87 | 1.02 | 1.30 | 0.67 | 47.5 | 26 | 33 | 17 | 0.19 | 87 |
| GD1855014 | | ¼ | ¼ | Female BSPP, Bulkhead* | 4 | 1.83 | 1.02 | 0.67 | 1.06 | 46.5 | 26 | 17 | 27 | 0.25 | 112 |
| GD1855038 | | ¾ | ¾ | Female BSPP, Bulkhead** | 4 | 1.87 | 1.02 | 0.79 | 1.26 | 47.5 | 26 | 20 | 32 | 0.33 | 150 |

To obtain connected length of coupling add Dimensions A or A+C (Fig. 1, 2, 3, 4) and D or D+E (Fig. 5, 6, 7) together and subtract 26 mm (1,02 in).

*Max bulkhead thickness: 10 mm (0,39 in) / Bulkhead hole diameter = 21 mm (0,83 in).

**Max bulkhead thickness: 12 mm (0,47 in) / Bulkhead hole diameter = 25 mm (0,98 in)

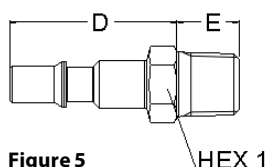


Figure 5

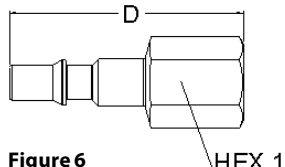


Figure 6

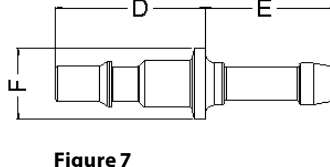


Figure 7

Plugs (Male)

| Part Number | Body Size | Port Size | Thread or Hose Diam. | Type | Fig. | Dimensions | | | Hex1 (in) | Hex2 (in) | D (mm) | E (mm) | F (mm) | Hex1 (mm) | Hex2 (mm) | Weight | |
|-------------|-----------|------------|----------------------|---------------|------|------------|--------|--------|-----------|-----------|--------|--------|--------|-----------|-----------|--------|-----|
| | | | | | | D (in) | E (in) | F (in) | | | | | | | | (lbs) | (g) |
| GK1866319 | | ¼ | ¼ | Male BSPP | 5 | 1.38 | 0.31 | - | 0.55 | - | 35 | 8 | - | 14 | - | 0.04 | 17 |
| GK1866318 | | ¼ | ¼ | Male BSPT | 5 | 1.34 | 0.31 | - | 0.47 | - | 34 | 8 | - | 12 | - | 0.03 | 14 |
| GK1866381 | | ¼ | ¼ | Male NPT | 5 | 1.34 | 0.39 | - | 0.47 | - | 34 | 10 | - | 12 | - | 0.03 | 15 |
| GK1866315 | | ¼ | ¼ | Male BSPP | 5 | 1.42 | 0.47 | - | 0.67 | - | 36 | 12 | - | 17 | - | 0.06 | 25 |
| GK1866314 | | ¼ | ¼ | Male BSPT | 5 | 1.40 | 0.51 | - | 0.55 | - | 35.5 | 13 | - | 14 | - | 0.05 | 23 |
| GK1866341 | | ¼ | ¼ | Male NPT | 5 | 1.42 | 0.59 | - | 0.67 | - | 36 | 15 | - | 17 | - | 0.07 | 30 |
| GK1866339 | | ¾ | ¾ | Male BSPP | 5 | 1.46 | 0.47 | - | 0.87 | - | 37 | 12 | - | 22 | - | 0.09 | 39 |
| GK1866338 | | ¾ | ¾ | Male BSPT | 5 | 1.48 | 0.47 | - | 0.75 | - | 37.5 | 12 | - | 19 | - | 0.08 | 37 |
| GK1866218 | | ¼ | ¼ | Female BSPP | 6 | 1.63 | - | - | 0.55 | - | 41.5 | - | - | 14 | - | 0.04 | 18 |
| GK1866281 | ¼ | ¼ | ¼ | Female NPT | 6 | 0.00 | - | - | 0.00 | - | - | - | - | - | - | 0.04 | 18 |
| GK1866214 | | ¼ | ¼ | Female BSPP | 6 | 1.97 | - | - | 0.67 | - | 50 | - | - | 17 | - | 0.07 | 33 |
| GK1866241 | | ¼ | ¼ | Female NPT | 6 | 1.97 | - | - | 0.67 | - | 50 | - | - | 17 | - | 0.07 | 32 |
| GK1866238 | | ¾ | ¾ | Female BSPP | 6 | 1.85 | - | - | 0.83 | - | 47 | - | - | 21 | - | 0.08 | 35 |
| GK1866245 | M 14 | M 14 x 125 | | Female Metric | 6 | 1.87 | - | - | 0.67 | - | 47.5 | - | - | 17 | - | 0.06 | 26 |
| GK1866767 | | | 6 mm | Hose Tail | 7 | 1.26 | 1.10 | 0.59 | - | - | 32 | 28 | 15 | - | - | 0.03 | 15 |
| GK1866778 | | | 7 mm | Hose Tail | 7 | 1.26 | 1.10 | 0.59 | - | - | 32 | 28 | 15 | - | - | 0.04 | 18 |
| GK1866789 | | | 8 mm | Hose Tail | 7 | 1.26 | 1.10 | 0.59 | - | - | 32 | 28 | 15 | - | - | 0.04 | 19 |
| GK1866790 | | | 9 mm | Hose Tail | 7 | 1.26 | 1.10 | 0.59 | - | - | 32 | 28 | 15 | - | - | 0.04 | 19 |
| GK1866701 | | | 10 mm | Hose Tail | 7 | 1.26 | 1.10 | 0.59 | - | - | 32 | 28 | 15 | - | - | 0.04 | 20 |
| GK1866713 | | | 13 mm | Hose Tail | 7 | 1.26 | 1.30 | 0.79 | - | - | 32 | 33 | 20 | - | - | 0.08 | 34 |

To obtain connected length of coupling add Dimensions A or A+C (Fig. 1, 2, 3, 4) and D or D+E (Fig. 5, 6, 7) together and subtract 26 mm (1,02 in).

Safeline Series

ISO 6150 C ID18900/IK18900

Pneumatic application

Danfoss' Safeline Series is an Industrial Interchange pneumatic coupling with push button safety feature designed for use with compressed air. Two-step disconnect procedure shuts off air supply and releases downstream air pressure before plug can be removed from socket/female, which prevents hose whip.



Product Features

- Safe and easy to connect and disconnect
- Light weight, compact ergonomic design
- Meets Safety Standard ISO 4414
- Meets ISO 6150 Series C Standard
- Standard body material: Dural
- Standard seal material: Buna-N
- Option: Private labelling

Physical Characteristics

| Body Size | Nominal Flow Diameter (mm) | Max. Operating Pressure Connected or Disconnected | | Air Flow Rate* Δp 0.6 bar/8.7 psi** | | Δp 1 bar/14.5 psi*** | | Working Temperature | |
|-----------|----------------------------|---|-------|---|-------|------------------------------|-------|---------------------|-----------|
| | | (bar) | (psi) | (lpm) | (gpm) | (lpm) | (gpm) | °C | °F |
| 3/8" | 8 | 16 | 232 | 1,080 | 285 | 1,350 | 356 | -20° +100° | -4° +212° |

*Indicated values refer to an inlet pressure of 6 bar / 87 psi.

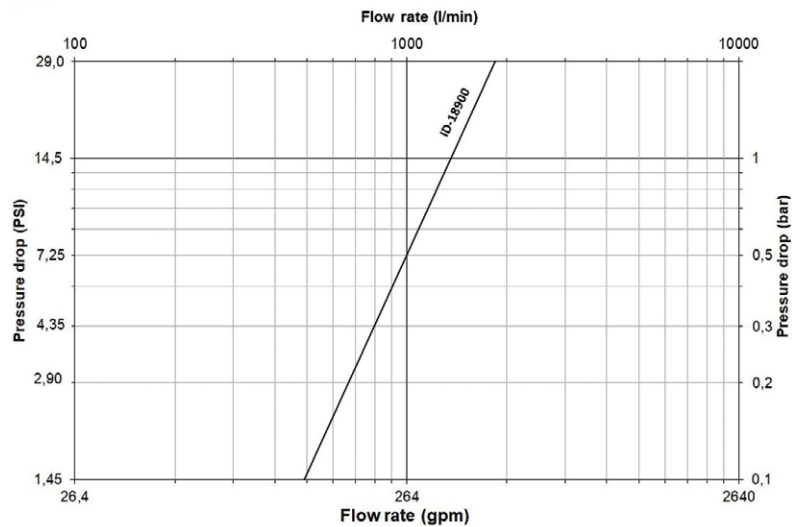
**This flow rate allows the optimum output from a pneumatic tool.

***This flow rate is the maximum recommended for a suitable output from a pneumatic tool. For applications needing higher flow rates, it is recommended to select a larger size coupling.

Applications & Markets

- General Pneumatics
- Air Tools
- Industrial Plants
- Maintenance and Repair

Flow Data



Safeline Series

ISO 6150 C ID18900/IK18900

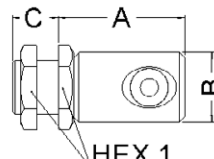
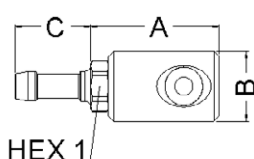
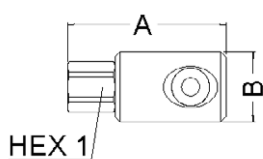
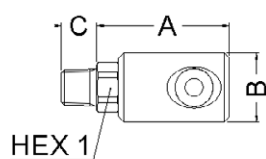


Figure 1

Figure 2

Figure 3

Figure 4

Sockets (Female)

| Part Number | Body Size | Port Size | Thread or Hose Diam. | Type | Fig. | Dimensions | | | Hex1 | A | B | C | Hex1 | Weight | |
|-------------|-----------|-----------|----------------------|-------------------------|------|------------|------|------|------|----|----|----|------|--------|-------|
| | | | | | | A | B | C | | | | | | (mm) | (lbs) |
| ID1896015 | | ¼ | ¼ | Male BSPP | 1 | 2.45 | 1.34 | 0.47 | 0.87 | 62 | 34 | 12 | 22 | 0.35 | 160 |
| ID1896014 | | ¼ | ¼ | Male BSPT | 1 | 2.45 | 1.34 | 0.51 | 0.87 | 62 | 34 | 13 | 22 | 0.36 | 162 |
| ID1896039 | | ¾ | ¾ | Male BSPP | 1 | 2.45 | 1.34 | 0.47 | 0.87 | 62 | 34 | 12 | 22 | 0.36 | 165 |
| ID1896038 | | ¾ | ¾ | Male BSPT | 1 | 2.45 | 1.34 | 0.59 | 0.87 | 62 | 34 | 15 | 22 | 0.37 | 168 |
| ID1896013 | | ½ | ½ | Male BSPP | 1 | 2.45 | 1.34 | 0.55 | 1.06 | 62 | 34 | 14 | 27 | 0.37 | 168 |
| ID1896012 | | ½ | ½ | Male BSPT | 1 | 2.45 | 1.34 | 0.67 | 0.87 | 62 | 34 | 17 | 22 | 0.40 | 180 |
| ID1897014 | | ¼ | ¼ | Female BSPP | 2 | 2.92 | 1.34 | - | 0.87 | 74 | 34 | - | 22 | 0.40 | 182 |
| ID1897038 | | ¾ | ¾ | Female BSPP | 2 | 3.02 | 1.34 | - | 0.87 | 77 | 34 | - | 22 | 0.40 | 180 |
| ID1897012 | | ½ | ½ | Female BSPP | 2 | 3.16 | 1.34 | - | 1.06 | 80 | 34 | - | 27 | 0.48 | 216 |
| ID1895689 | - | | 8 mm | Hose Tail | 3 | 2.49 | 1.34 | 1.10 | 0.87 | 63 | 34 | 28 | 22 | 0.36 | 165 |
| ID1895690 | - | | 9 mm | Hose Tail | 3 | 2.49 | 1.34 | 1.10 | 0.87 | 63 | 34 | 28 | 22 | 0.35 | 160 |
| ID1895601 | - | | 10 mm | Hose Tail | 3 | 2.49 | 1.34 | 1.10 | 0.87 | 63 | 34 | 28 | 22 | 0.37 | 166 |
| ID1895613 | - | | 13 mm | Hose Tail | 3 | 2.49 | 1.34 | 1.30 | 0.87 | 63 | 34 | 33 | 22 | 0.39 | 177 |
| ID1895038 | | ¾ | ¾ | Female BSPP, Bulkhead* | 4 | 2.37 | 1.34 | 0.79 | 1.26 | 60 | 34 | 20 | 32 | 0.52 | 235 |
| ID1895012 | | ½ | ¾ | Female BSPP, Bulkhead** | 4 | 2.39 | 1.34 | 0.91 | 1.38 | 61 | 34 | 23 | 35 | 0.59 | 269 |

To obtain connected length of coupling add Dimensions A or A+C (Fig. 1, 2, 3, 4) and D or D+E (Fig. 5, 6, 7) together and subtract 40 mm (1,57 in).

*Max bulkhead thickness: 12 mm (0,47 in) / Bulkhead hole diameter = 25 mm (0,98 in)

**Max bulkhead thickness: 15 mm (0,59 in) / Bulkhead hole diameter = 31 mm (1,22 in)

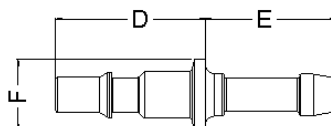
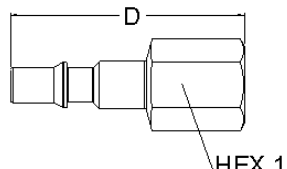
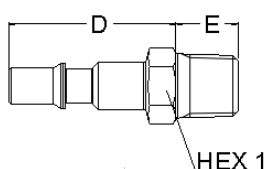


Figure 5

Figure 6

Figure 7

Plugs (Male)

| Part Number | Body Size | Port Size | Thread or Hose Diam. | Type | Fig. | Dimensions | | | Hex1 | D | E | F | Hex1 | Weight | |
|-------------|-----------|-----------|----------------------|-------------|------|------------|------|------|------|----|----|----|------|--------|------|
| | | | | | | D | E | F | | | | | | (mm) | (mm) |
| IK1890615 | | ¼ | ¼ | Male BSPP | 5 | 1.81 | 0.47 | - | 0.75 | 46 | 12 | - | 19 | 0.10 | 44 |
| IK1890614 | | ¼ | ¼ | Male BSPT | 5 | 1.77 | 0.51 | - | 0.67 | 45 | 13 | - | 17 | 0.08 | 38 |
| IK1890641 | | ¼ | ¼ | Male NPT | 5 | 1.77 | 0.51 | - | 0.67 | 45 | 13 | - | 17 | 0.09 | 39 |
| IK1890639 | | ¾ | ¾ | Male BSPP | 5 | 1.81 | 0.47 | - | 0.87 | 46 | 12 | - | 22 | 0.11 | 51 |
| IK1890638 | | ¾ | ¾ | Male BSPT | 5 | 1.77 | 0.59 | - | 0.75 | 45 | 15 | - | 19 | 0.11 | 51 |
| IK1890683 | | ¾ | ¾ | Male NPT | 5 | 1.77 | 0.59 | - | 0.75 | 45 | 15 | - | 19 | 0.11 | 52 |
| IK1890613 | | ½ | ½ | Male BSPP | 5 | 1.81 | 0.55 | - | 1.02 | 46 | 14 | - | 26 | 0.16 | 73 |
| IK1890612 | | ¾ | ½ | Male BSPT | 5 | 1.77 | 0.67 | - | 0.87 | 45 | 17 | - | 22 | 0.15 | 66 |
| IK1890714 | | ¼ | ¼ | Female BSPP | 6 | 2.36 | - | - | 0.67 | 60 | - | - | 17 | 0.09 | 40 |
| IK1890741 | | ¼ | ¼ | Female NPT | 6 | 2.36 | - | - | 0.67 | 60 | - | - | 17 | 0.09 | 40 |
| IK1890738 | | ¾ | ¾ | Female BSPP | 6 | 2.36 | - | - | 0.83 | 60 | - | - | 21 | 0.11 | 52 |
| IK1890783 | | ¾ | ¾ | Female NPT | 6 | 2.36 | - | - | 0.83 | 60 | - | - | 21 | 0.12 | 55 |
| IK1890712 | | ½ | ½ | Female BSPP | 6 | 2.36 | - | - | 1.02 | 60 | - | - | 26 | 0.15 | 66 |
| IK1890989 | - | | 8 mm | Hose Tail | 7 | 1.65 | 1.10 | 0.63 | - | 42 | 28 | 16 | - | 0.07 | 33 |
| IK1890990 | - | | 9 mm | Hose Tail | 7 | 1.65 | 1.10 | 0.63 | - | 42 | 28 | 16 | - | 0.07 | 33 |
| IK1890901 | - | | 10 mm | Hose Tail | 7 | 1.65 | 1.10 | 0.63 | - | 42 | 28 | 16 | - | 0.08 | 35 |
| IK1890913 | - | | 13 mm | Hose Tail | 7 | 1.65 | 1.30 | 0.79 | - | 42 | 33 | 20 | - | 0.10 | 46 |

To obtain connected length of coupling add Dimensions A or A+C (Fig. 1, 2, 3, 4) and D or D+E (Fig. 5, 6, 7) together and subtract 40 mm (1,57 in).

Safeline Series

ISO 6150 C TD18300/TK18300

Pneumatic application



Danfoss' Safeline Series is an Industrial Interchange pneumatic coupling with push button safety feature designed for use with compressed air. Two-step disconnect procedure shuts off air supply and releases downstream air pressure before plug can be removed from socket/female, which prevents hose whip.

Product Features

- Safe and easy to connect and disconnect
- Light weight, compact ergonomic design
- Meets Safety Standard ISO 4414
- Meets ISO 6150 Series C Standard
- Standard body material: Dural
- Standard seal material: Buna-N
- Option: Private labelling

Physical Characteristics

| Body Size | Nominal Flow Diameter (mm) | Max. Operating Pressure Connected or Disconnected | | Air Flow Rate* Δp 0.6 bar/8.7 psi** | | Δp 1 bar/14.5 psi*** | | Working Temperature | |
|-----------|-------------------------------|--|-------|--|-------|----------------------|-------|---------------------|-----------|
| | | (bar) | (psi) | (lpm) | (gpm) | (lpm) | (gpm) | °C | °F |
| ½ | 11 | 16 | 232 | 2,400 | 634 | 3,000 | 793 | -20° +100° | -4° +212° |

*Indicated values refer to an inlet pressure of 6 bar / 87 psi.

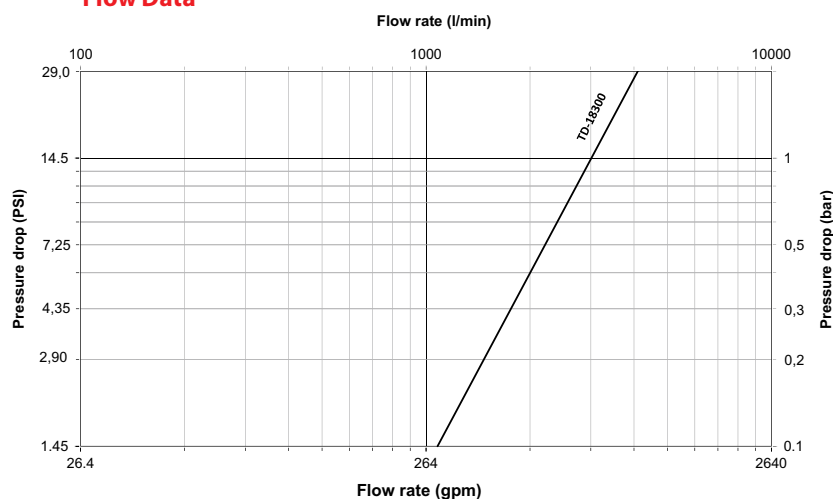
**This flow rate allows the optimum output from a pneumatic tool.

*** This flow rate is the maximum recommended for a suitable output from a pneumatic tool. For applications needing higher flow rates, it is recommended to select a larger size coupling.

Applications & Markets

- General Pneumatics
- Air Tools
- Industrial Plants
- Maintenance and Repair

Flow Data



Air flow-rate at 6 bar (87 psi)

Safeline Series

ISO 6150 C TD18300/TK18300

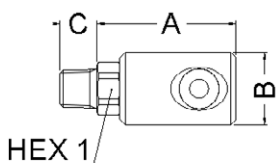


Figure 1

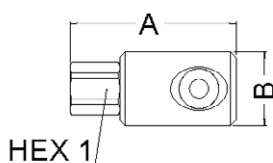


Figure 2

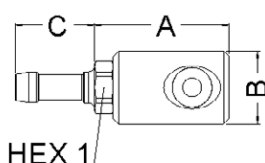


Figure 3

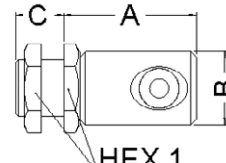


Figure 4

Sockets (Female)

| Part Number | Body Size | Port Size | Thread or Hose Diam. Type | Fig. | Dimensions | | | | | Dimensions | | | | | Weight | | |
|-------------|-----------|-----------|---------------------------|-------------|------------|------|------|------|------|------------|------|------|------|------|--------|------|-----|
| | | | | | A | B | C | Hex1 | Hex2 | A | B | C | Hex1 | Hex2 | (lbs) | (g) | |
| | | | | | (in) | (in) | (in) | (in) | (in) | (in) | (mm) | (mm) | (mm) | (mm) | (mm) | | |
| TD1832012 | | 1/2 | 1/2 | Male BSPT | 1 | 2.78 | 1.56 | 0.67 | 1.06 | - | 70.6 | 39.5 | 17 | 27 | - | 0.58 | 262 |
| TD1832034 | | 3/4 | 3/4 | Male BSPT | 1 | 2.78 | 1.56 | 0.73 | 1.14 | - | 70.6 | 39.5 | 19 | 29 | - | 0.63 | 287 |
| TD1832138 | | 3/8 | 3/8 | Female BSPP | 2 | 3.27 | 1.56 | 1.06 | - | - | 83.1 | 39.5 | - | 27 | - | 0.62 | 280 |
| TD1832112 | | 1/2 | 1/2 | Female BSPP | 2 | 3.27 | 1.56 | 1.06 | - | - | 83.1 | 39.5 | - | 27 | - | 0.58 | 261 |
| TD1832134 | 1/2 | 3/4 | 3/4 | Female BSPP | 2 | 3.51 | 1.56 | 1.26 | - | - | 89.1 | 39.5 | - | 32 | - | 0.67 | 304 |
| TD1835601 | - | 10 mm | Hose Tail | 3 | 2.84 | 1.56 | 1.10 | 1.06 | - | - | 72.1 | 39.5 | 28 | 27 | - | 0.56 | 256 |
| TD1835613 | - | 13 mm | Hose Tail | 3 | 2.84 | 1.56 | 1.30 | 1.06 | - | - | 72.1 | 39.5 | 33 | 27 | - | 0.59 | 267 |
| TD1835616 | - | 16 mm | Hose Tail | 3 | 2.84 | 1.56 | 1.30 | 1.06 | - | - | 72.1 | 39.5 | 33 | 27 | - | 0.60 | 270 |
| TD1835012 | 1/2 | 1/2 | Female BSPP, Bulkhead* | 4 | 2.78 | 1.56 | 0.91 | 1.38 | - | - | 70.6 | 39.5 | 23 | 35 | - | 0.76 | 343 |
| TD1835034 | 3/4 | 3/4 | Female BSPP, Bulkhead** | 4 | 2.82 | 1.56 | 0.98 | 1.50 | - | - | 71.6 | 39.5 | 25 | 38 | - | 0.77 | 350 |

To obtain connected length of coupling add Dimensions A or A+C (Fig. 1, 2, 3, 4) and D or D+E (Fig. 5, 6, 7) together and subtract 20 mm (0,79 in).

*Max bulkhead thickness: 15 mm (0,59 in) / Bulkhead hole diameter = 31 mm (1,22 in)

**Max bulkhead thickness: 16 mm (0,63 in) / Bulkhead hole diameter = 33 mm (1,30 in)

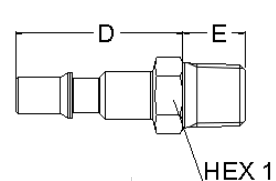


Figure 5

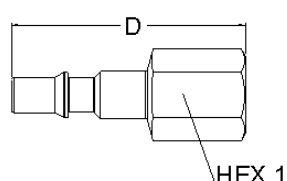


Figure 6

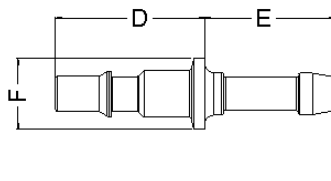


Figure 7

Plugs (Male)

| Part Number | Body Size | Port Size | Thread or Hose Diam. Type | Fig. | Dimensions | | | Dimensions | | | Weight | | | |
|-------------|-----------|-----------|---------------------------|-------------|------------|------|------|------------|------|------|--------|------|-------|-----|
| | | | | | D | E | F | Hex1 | D | E | F | Hex1 | (lbs) | (g) |
| | | | | | (in) | (in) | (in) | (in) | (mm) | (mm) | (mm) | (mm) | | |
| TK1831539 | | 3/8 | 3/8 | Male BSPP | 5 | 2.01 | 0.47 | 0.87 | 51.1 | 11.9 | - | 22 | 2.32 | 59 |
| TK1831512 | | 1/2 | 1/2 | Male BSPT | 5 | 1.97 | 0.67 | 0.87 | 50 | 17 | - | 22 | 2.56 | 65 |
| TK1831534 | | 3/4 | 3/4 | Male BSPT | 5 | 2.11 | 0.73 | 1.14 | 53.5 | 18.5 | - | 29 | 3.86 | 98 |
| TK1831638 | | 3/8 | 3/8 | Female BSPP | 6 | 2.56 | - | 1.02 | 65 | - | - | 26 | 3.70 | 94 |
| TK1831612 | 1/2 | 1/2 | 1/2 | Female BSPP | 6 | 2.56 | - | 1.02 | 65 | - | - | 26 | 3.02 | 77 |
| TK1831634 | | 3/4 | 3/4 | Female BSPP | 6 | 2.87 | - | 1.26 | 73 | - | - | 32 | 5.02 | 128 |
| TK1831889 | - | 8 mm | Hose Tail | 7 | 1.85 | 1.10 | 0.79 | - | 47 | 28 | 20 | - | 1.87 | 48 |
| TK1831801 | - | 10 mm | Hose Tail | 7 | 1.85 | 1.10 | 0.79 | - | 47 | 28 | 20 | - | 1.91 | 48 |
| TK1831813 | - | 13 mm | Hose Tail | 7 | 1.85 | 1.30 | 0.79 | - | 47 | 33 | 20 | - | 2.19 | 56 |
| TK1831816 | - | 16 mm | Hose Tail | 7 | 1.85 | 1.30 | 0.79 | - | 47 | 33 | 20 | - | 2.40 | 61 |

To obtain connected length of coupling add Dimensions A or A+C (Fig. 1, 2, 3, 4) and D or D+E (Fig. 5, 6, 7) together and subtract 20 mm (0,79 in).